

# Energy efficient climate control in museum stores and archives



What are the needs of the collection?





# What do the standards recommend



# What can we learn from experience??



The Segovia castle, Spain. Military archive is in the basement



# How can old buildings be reused?

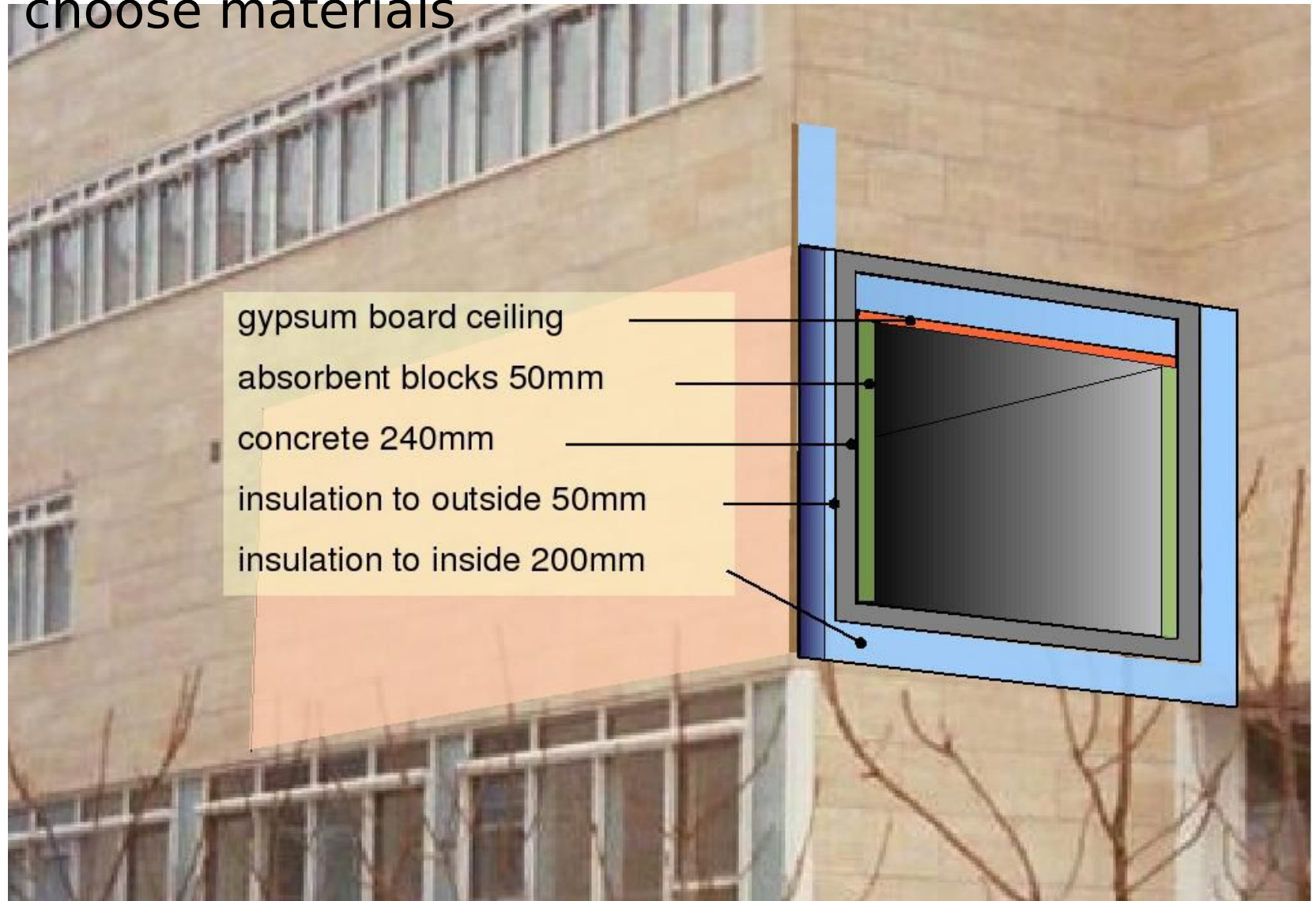


How should new buildings be designed ?





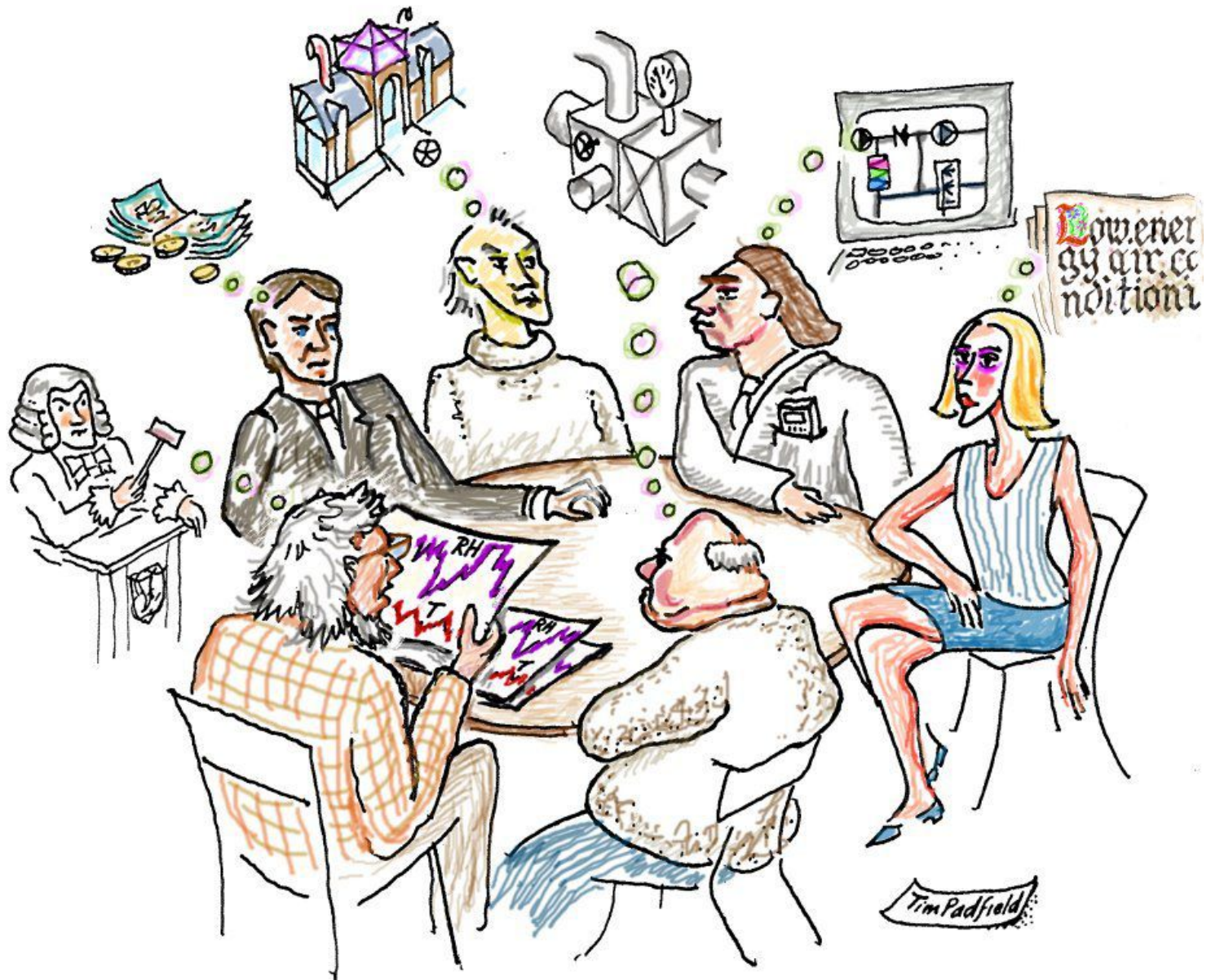
# How do we define the multi layer structure and choose materials



Do we need technical equipment and systems ?







Can we find a compromise between opposite opinions?

