

INCISED CERAMICS (1650-1250 B.C.) DEGRADATIONS CAUSED BY THE MICROCLIMATE IN THE STORAGE AREA

Simona-Violeta Gheorghe
The Oltenia Museum, Romania



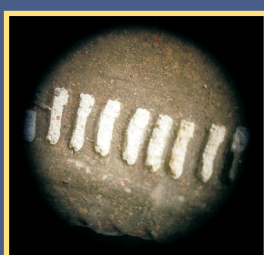
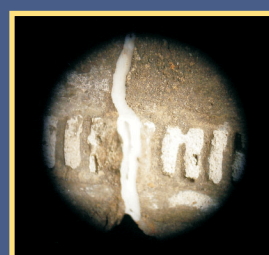
Detached fragments



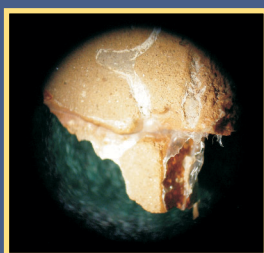
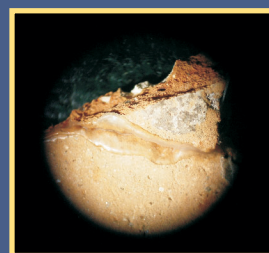
Degradations of gypsum fillings



The "flourishing" of soluble salts



Stereomicroscopic images of incised decor degradations



Stereomicroscopic images of adhesive degradations

Variations of temperature and RH inside the storage area

