

THE HISTORIC AND ETHNOGRAPHIC ART MUSEUM OF ORESTIADA IN GREECE - *Ars longa Vita brevis.*

DOROTA NOWACKA, VASILIOS LAMPROPOULOS

DEPARTMENT OF CONSERVATION OF ANTIQUITIES AND WORKS OF ART, FACULTY OF GRAPHIC ARTS AND DESIGN, TECHNOLOGICAL EDUCATIONAL INSTITUTION OF ATHENS

The study was based on *in situ* research and inventory of the collection's objects, the state of preservation of artifacts, the methodical control and measurements, the building and inner exhibit and storage spaces on the conduction of a series of interviews, which include detailed questionnaire, with the museum's staff and on researching the Museum's archival materials along with the related bibliography. The study focused on the specific environmental condition in which the Museum's collection are stored and displayed, the Museum's working weaknesses, the specific architectural and design problems, as well as suggestions for technical improvements that will affect the future operation and viability of the Museum.

THE COLLECTIONS OF THE HISTORIC AND ETHNOGRAPHIC ART MUSEUM OF ORESTIADA



1. The Historic and Ethnographic Art Museum of Orestiada, a small town in Northern Greece, was established in 1972. The concentration, conservation, and display of a large number of rare and sentimentally valuable objects make a significant contribution to the preservation of the cultural heritage and history of Eastern Thrace.



2. Icons and ecclesiastical relics from churches of Eastern Thrace.

The collections of the Historic and Ethnographic Art Museum of Orestiada include:

- Photographic and archival materials, publications and books
- Material documents of the trade and the traditional professions
- Agricultural tools
- Furniture and objects of domestic use
- Musical instruments
- Icons
- Ecclesiastical relics from churches of Eastern Thrace
- Traditional costumes
- Weaving tool.



3. Traditional furniture and objects of domestic use of Eastern Thrace.

THE ENVIRONMENTAL CONDITIONS UNDER WHICH THE OBJECTS ARE EXHIBITED AND STORED

CLIMATE FACTORS	ORESTIADA
Mean annual wind temperature (°C)	14.6
Absolute maximum wind temperature (°C)	42.5
Absolute minimum wind temperature (°C)	-20.0
Mean annual rainfall (mm.)	579.8
Average number of rainy days	93.9
Average number of frosty days	56.1

4. Climatic data for lowland and upland area of Orestiada, Service for Border Development Thrace.

DATE	TIME	RH	T(°C)
3.05.2006	10.00	78%	21.0
3.05.2006	18.00	76%	19.8
4.09.2006	10.00	74%	22.1
4.09.2006	18.00	78%	20.0
5.09.2006	10.00	79%	22.5

DATE	TIME	RH
12.05.2006	12.00	75%
13.05.2006	12.00	75%
14.05.2006	12.00	76%
15.05.2006	12.00	78%
16.05.2006	12.00	78.5%
17.05.2006	12.00	80%

DATE	TIME	RH
12.05.2006	10.00	78%
12.05.2006	12.00	76%
12.05.2006	14.00	74%
12.05.2006	18.00	76%
12.05.2006	21.00	78%
12.05.2006	02.00	79%

5. 6. 7. Museum microclimate parameters. The wrong use of the air-condition system (on/off switch) connected with the climate factors of the area of Orestiada caused high level of relative humidity.

THE PRESENT STATE OF THE MUSEUM'S BUILDING FACILITIES



8. The facade of the Museum's new building.

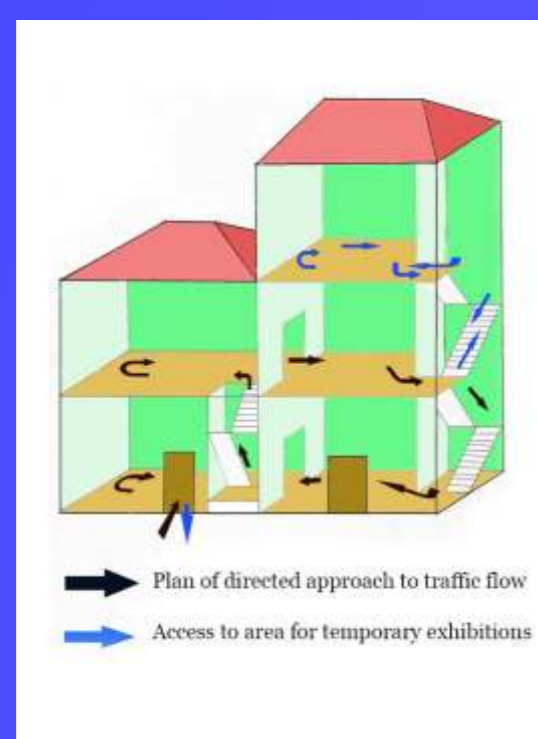


9. 10. View of the first and second floor of the Museum's new building - temporary collection storage area.

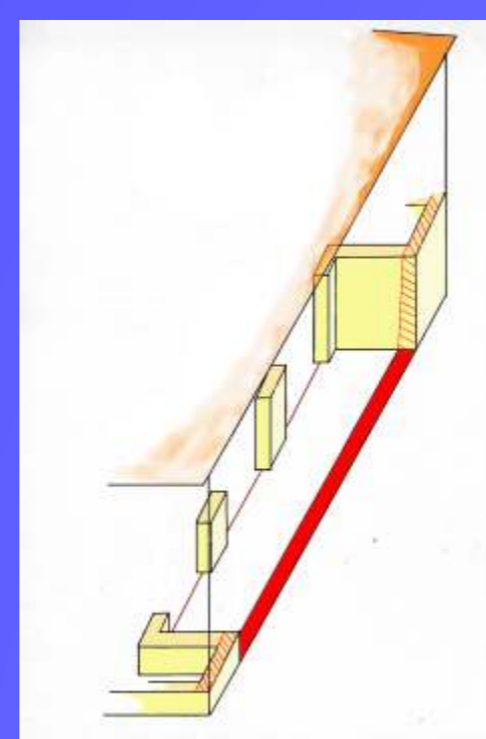


11. 12. The high level of RH, the architectural and design problems caused series of damages in the inner spaces of the Museum's new building.

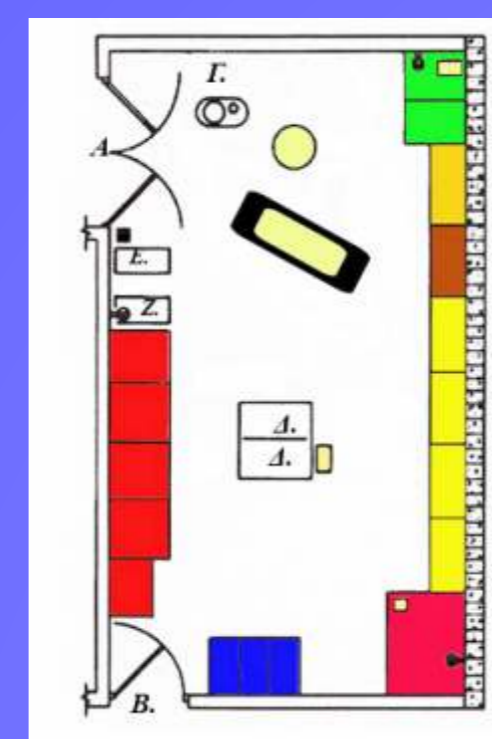
SUGGESTIONS FOR TECHNICAL IMPROVEMENTS



13. Plan of the suggested directed approach to traffic flow.



14. Suggested rebuilding of the balcony door in order to improve the existing environmental conditions.



15. Plan of the suggested collection storage area.

COLLECTION STORAGE AREA	
Red	Storage units for furniture, agricultural tools and musical instruments
Green	Space for preventive conservation laboratory
Yellow	Storage units for traditional costumes and other textile objects
Blue	Storage units for photographic and archival material
Orange	Storage units for metallic objects
Brown	Storage units for glass and ceramic objects
Dark Red	Storage units for icons and painting framed objects
Light Green	Space for oversized agricultural tools and furniture
White	Climate control equipment
Black	Fire protection equipment
Circle	110 Volt electrical outlet
A	Mine storage door
Circle with X	Emergency exit
Circle with dot	Mobile environmental protection equipment
Circle with square	Workshop space
Circle with triangle	Mobile tools and shelves
Circle with diamond	Archives units

The results have pointed that the main risk for the sensitive collection's objects is connected with the wrong use of air-condition system, lack of storage space and architectural and design problems. For the realization of the suggested short and long-term improvements and the future progress of the Museum the financial status of the Museum was taken under consideration.